



# Experiences from the first season of PattegriseLIV 2.0

Nina Roland Simonsen, LandboNord  
Kickoff meeting  
PattegriseLIV



LandboNord

# Agenda

- General experiences from 2.0
- Experiences from farm school
- Two important focus points



Take-home messages:

- It is important to understand that it requires focus to reach your goals!

# Congratulation 😊

- Unique opportunity!
  - Share knowledge with others
  - See other farms and talk about routines
  - A targeted course with great opportunity for good results

# General experiences

- Step 1: Look in to why the piglets die
  - Registrations of dead piglets
  - Include the veterinarian in the process
  - Best off all!
    - Postmortem examination (USK)
      - It can show surprising results!

# Postmortem examination

- 50 dead piglets
- Randomly chosen
- Kjellerup
- Dissect the pigs and find the cause of dead



# Post mortem examination (USK)

- Crushed and weak born
- Example of cause of dead (2015)

Day 1-4



Day 5-11



Day 12 - weaning



# General experinces

- Secure colostrum for all piglets!
  - Heat and energy boost can not make it up for colostrum
    - Make nursing sows ammesøer several times a day
    - Mark firstborn piglets
    - Get the piglets to the right sow



# General troubleshooting

- Temperature
  - Room
    - 21-23 °C
    - In a clean and dry stable
  - Floor heating
    - 40-42 °C
    - Functional!





# General troubleshooting

- Temperature
  - Corner
    - 34-36 °C
  - Extra warm:
    - Extra warm lamp
    - Paper





# General troubleshooting

- Feed
  - Curve, composition and daily feedings
  - Focus on body condition of the sow
  - Make sure that the sow has enough energy around farrowing
  - Weighing of feed



# Feeding curve - Gestation

Dage	Fed	Middel	Mager	Gylte
0	2,5	3,0	4,5	2,2-2,4
26	2,5	3,0	4,5	2,2-2,4
31	2,3	2,3	3,5	2,5-2,7
77	2,3	2,3	3,5	2,5-2,7
84	3,5	3,5	3,5	3,3
112	3,5	3,5	3,5	3,3
114	3,5	3,5	3,5	3,3
115	3,5	3,5	3,5	3,0-3,5
Faring	3,5	3,5	3,5	3,0-3,5

# Energy for farrowing

—  
Energy deficiency  
=> Prolonged farrowings

Blockage of birth tract  
=> Prolonged farrowings

?

2.0 FEso/day

Feed dose

5.5 FEso/day



# Feeding curve - Lactation

- Day 0 = 3,5 FE
- Day 1-7 = + 0,5 FE/day
- Day 7 till max = + 0,3 FE/day
- Maximum
  - 3 FE
  - + 0,5 FE per piglet
  - 13 pigs = 9,5 FE/day

Day	FEsow
0	3,5
3	4,5
5	5,5
7	6,5
8	6,8
14	8,6
17	9,5
Weaning	9,5

# General experinces

- A good start and early action is important!
  - Only a healthy sow can take care of pigs!
    - (Make sure that she is! Early action against sick sows)
- Shifted work? Evening and/or morning
  - Farrowing help
  - Cold pigs
  - Nursing sows (ammeso)



# General experinces

- Talk about routines:
  - Are we doing the same? (Also in the weekend)
  - What is the right way to do it?
  - A plan for routines around farrowing?
  - Do we need extra hands/help on the big farrowing days?



# Video

- Experiences from one of the farms participating last time in PattegriseLIV 2.0
- Open link in the chat 😊



# Experiences for farm school

- Important that everybody share
- Tell all your ideas and suggestions
- Share both the good and bad things



# Experiences for farm school

- Farm school is a good way to work concentrated with a topic.
- It is nice to get others opinion and experiences.
- It was nice to have technical talks with others
- Nice to small-talk
- Good to have many consultants at once

- Jannick



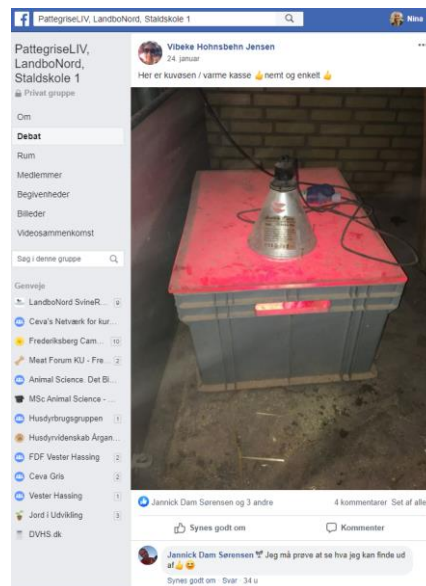
- Henriette



LandboNord

# Facebook group

- Ask questions
- Share pictures and videos
- Share the success 😊



# PattegriseLIV 2.0

- First season have shown two major focus point we needs to be aware of:
- Communication
- Focus on the project



# Communication

- Share information
  - Inform everybody about the changes, everybody needs to know, to be able to help and to do their best in the weekends
- Tell everybody about the farm school meetings
  - What have you seen
  - Ideas and inspiration
- If something changes, tell the consultant



# Focus on the project

- Start as soon as possible
  - Not the day before next meeting
- Try to prioritizes these focus points.
- Focus does not mean use the double amount of time
- Be realistic, do not says yes to more than you are able to succeed with



LandboNord

# A suggestion/example

- Find the best way for your farm to follow up and have an overview. Find the system there works for you 😊

- Goal
- Visits
  - Date
  - Agenda
  - Focus point
- Farmschool
  - Date
  - Focus point

LandboNord

## Projekt pattegriseLIV

Målsætning: 12 % døde i fødestaden 1,6 dødfødt/kuld vi vil arbejde målrettet med sødeligheden.

Dato: 15. sep	Dato: 21. okt	Dato: 16. nov	Dato: 11. jan	Dato: 18. feb
Dagsorden/fokuspunkter: • Mølsetning • Foder • Rutiner	Dagsorden/fokuspunkter: • Høsting / Anov • Fødestilp • USK pattegriseLIV	Dagsorden/fokuspunkter: • Aftenvagt •	Dagsorden/fokuspunkter: • • •	Dagsorden/fokuspunkter: • • •
Indsatspunkter: • Søker - tidspunkt • Håndtere ved problemer •	Indsatspunkter: • • •	Indsatspunkter: • • •	Indsatspunkter: • • •	Indsatspunkter: • • •

### Staldskole

Dato: 9. oktober	Dato: 13. november	Dato: 7. december	Dato: 12. januar	Dato: 15. februar
Indsatspunkter: • Tiel D. Vit • Ammebør 2 gange	Indsatspunkter: • • •	Indsatspunkter: • • •	Indsatspunkter: • • •	Indsatspunkter: • • •

Nina Roland Simonsen  
Svineskoleholder LandboNord  
91172474, nrs@landbonord.dk

LandboNord

PARTNER I

DLBR®

# Take home messages

- Find out why the piglets die
- Secure colostrum for all piglets
- Make a general troubleshooting
- Talk about routines
- Communicate on the farm
- It is important to understand that it requires focus to reach your goals!







LandboNord

# Thank you for your time 😊

